

Flat Panel TV Wall Mount Instruction Manual – Solight 1MN20

NOTE: We recommend that this product is installed by the professional only. We accept no liability for damages caused by incorrect assembly, installation or use. If there is any doubt, please contact the specialist from the seller for help.

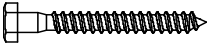




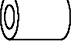






IMPORTANT!

- For safety reasons, the wall or mounting surface must be capable of supporting the combined weight of the mount and the display; otherwise the structure must be reinforced.
- Safety gear and proper tools must be used. Failure to do so can result in property damage and/or serious injury.
- Make sure that no electrical cables, water pipes or gas pipes are located within the wall.

Tools required for the installation:

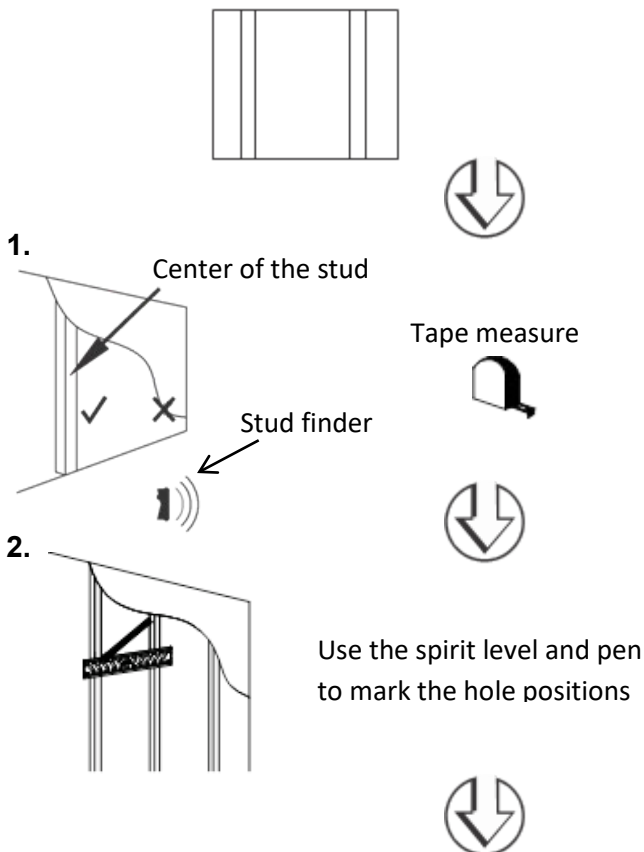
- Phillips Head Screw Driver
- Electric or Portable Drill
- Ratchet Driver with 1/2" (13 mm) Socket
- 1/4" (6 mm) Drill Bit + Stud Finder (Drywall Installation)
- 7/16" (11 mm) Masonry Bit (Concrete Installation)

Also make sure that all of the hardware has been included with your mount. You should find the following:

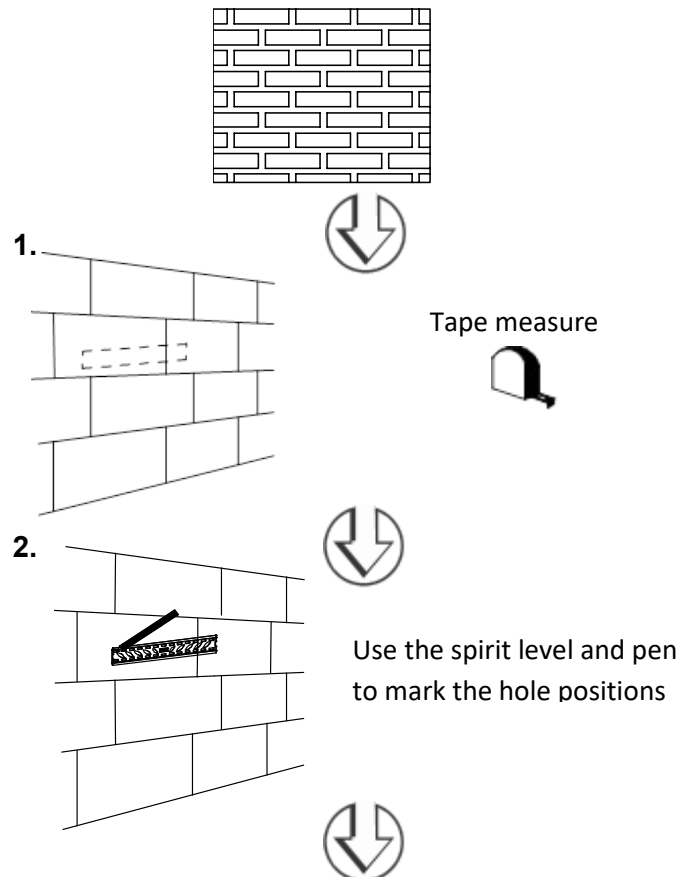
- | | | | | | |
|------------------------|--|-------------------------|---|-------------------------|--|
| (A) M8x63 Lag Bolt x 4 |  | (B) Concrete Anchor x 4 |  | (C) Lag bolt washer x 4 |  |
| (D) M4x12 Bolt x 4 |  | (E) M4x25 Bolt x 4 |  | (F) Large spacer x 4 |  |
| (G) M6x12 Bolt x 4 |  | (H) M6x430 Bolt x 4 |  | (I) M6 washer x 4 |  |
| (J) M8x12 Bolt x 4 |  | (K) M8x30 Bolt x 4 |  | (L) Small spacer x 4 |  |

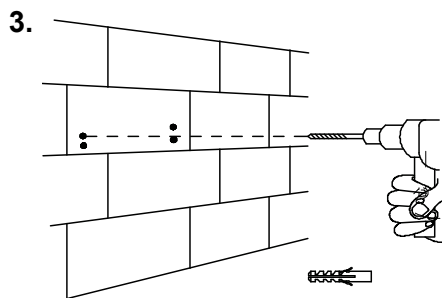
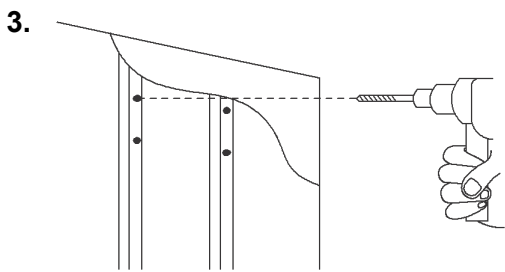
Installing the wall mount

Drywall installation

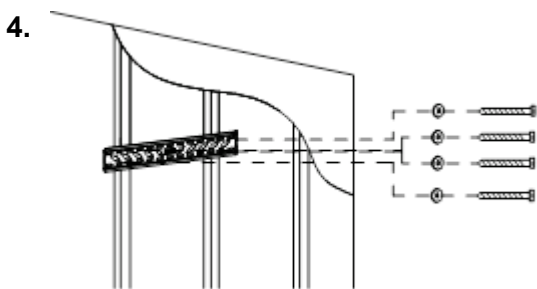


Concrete / Brick installation

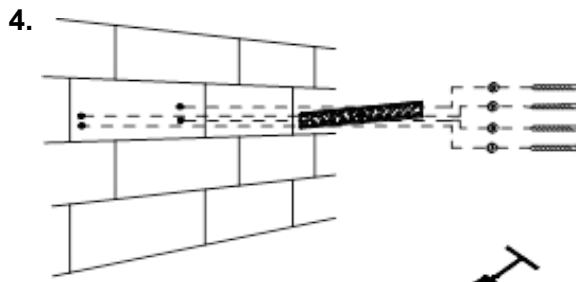




Insert one
Concrete
Anchor (B)
into each hole.

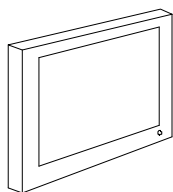


Fix the wall plate to the wall using the Lag Bolt (A) provided

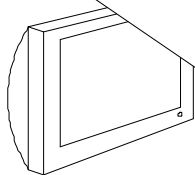


Fix the wall plate to the wall using the Lag Bolt (A) provided

5. Choose the proper bolts for installation.

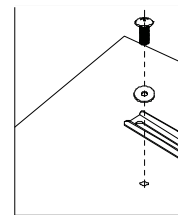


Displays with flat backs

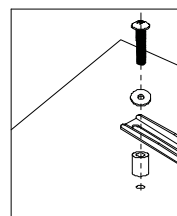


Displays with curved or recessed backs.

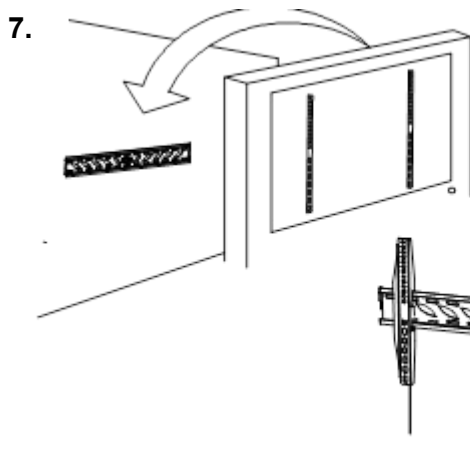
6. Install the screen on the display plate.



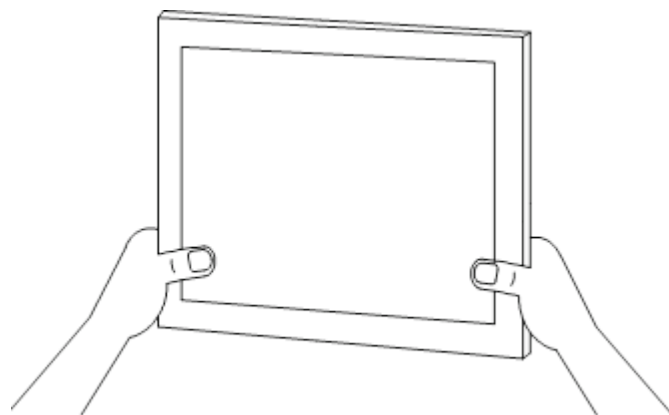
Displays with flat backs



Displays with curved or recessed backs.



Place the display plate with the tv on the wall plate.



Tighten the screw to lock the display plate on the wall plate.